

## Retail & Commercial Profile

January 2012

Mewès and Davis operates throughout the UK for some of the country's leading businesses.

It has design offices in Plymouth and in Krakow, Poland.

MDA's core skills are in master planning, retail and mixed use development, housing both large scale and bespoke, graphics and wayfinding. Current work focuses on sustainability and the use of carbon reduction and renewable energy technologies.

Our core values embrace challenge, responsiveness, quality and team ethic.

Founded in 1900 the practice has been responsible for the original designs of many notable properties in London including The Ritz Hotel, Number One Aldwych, Threadneedles, 41 Lothbury, The Royal Automobile Club, Pall Mall and, in the 60's, sound studios for Apple Corp.

Today MDA services public and private sector clients in wide- ranging projects, from the renovation of one of the country's oldest synagogues, to the design of large scale sustainable retail developments embodying advanced carbon reduction and renewable energy technologies.

The practice maintains long-term client relationships and welcomes early consultation in strategic development and planning processes. MDA's Krakow office opened in 1997.

MDA pursues best design resolves. These are invariably achieved through pragmatism, the use of appropriate materials and technologies, combined with realistic budgets.

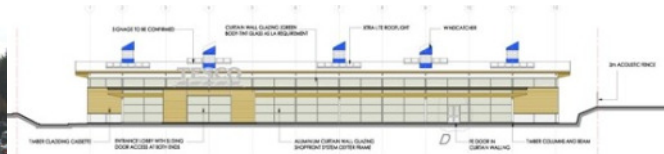
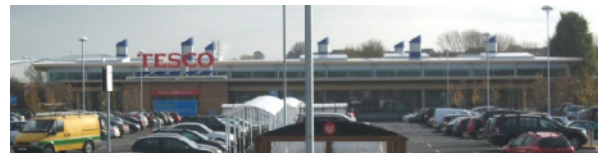


## Mewès & Davis Architects

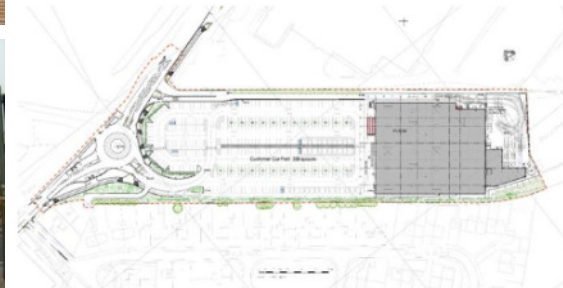
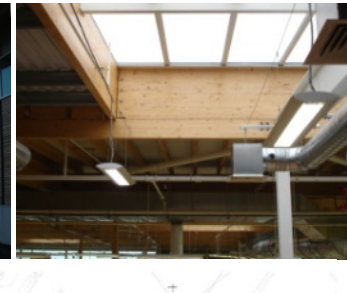


MDA are one of the founding members of the Tesco Architect's Group and Centre of Excellence formed in 2001. In their long association with Tesco their architectural services have included:-

- Production of feasibility and site appraisal schemes for over 1.5 million sq.ft of retail accommodation.
- Delivering over 500,000 sq.ft of retail sales floor area.
- Contributing to and taking responsibility for the evolution of Daylight stores, Concept stores and Environmental store design.
- Carrying out 'in-use' objective appraisals of completed store projects, providing feedback to Tesco for continuous improvement in store design, cost and buildability.
- Leading Tesco Rapid Action Team on urgent priorities as store formats and legislation evolve.



## Tesco Store Developments, UK





- Feasibility and site appraisals for over 18 million sq.ft. retail and delivery of over 5 million sq.ft. for Tesco Stores
- Creating benchmark Site Appraisal Reports used by Tesco central Europe
- Quoted as 'Tesco's best feasibility Architects in Europe' by Bruce Hale (Tesco International Development Director)
- Solus feasibility architects for Tesco Polska.



## Tesco Store Developments, Poland



- MDA's retail design work for Asda includes:-
- Production of feasibility schemes for over 1.2m sq.ft retail space.
  - Involvement in large scale mixed use retail / leisure / residential schemes.
  - Delivery of over 117,000 sq.ft of retail space.
  - Design and procurement of the Bridgwater store adopted as the Asda model store.
  - Delivery of mixed use schemes including cinema, leisure, retail, residential, Scout HQ and bus interchange with Asda anchor stores.



Asda Store Developments

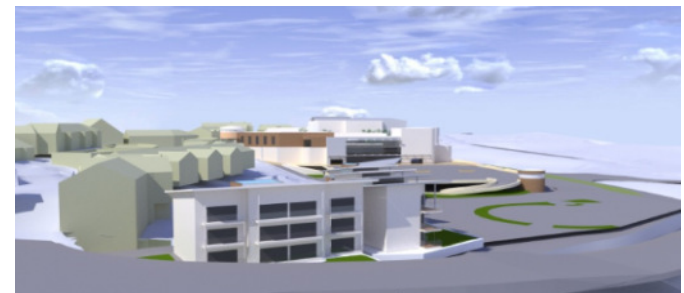




3D modelling and visualisation techniques are used extensively during feasibility and master planning stages of each project, both as a design tool, and as a means of conveying design intent to both professional and lay members of the design / client team. Models are customarily developed in greater detail as the design progresses and may be used in the promotion of schemes to planning committees and for general presentation.



3D Modelling and Visualisations



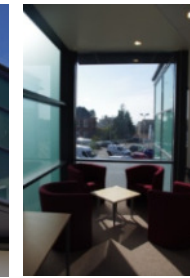
Within a context of existing landscape planting and retained buildings in a Conservation Area, the design process was highly challenging and required an innovative approach to accommodate the client's operational requirements within the many planning restrictions.

The store provides a ground floor retail area of 22,000sq.ft within a two storey shell of 36,000sq.ft.

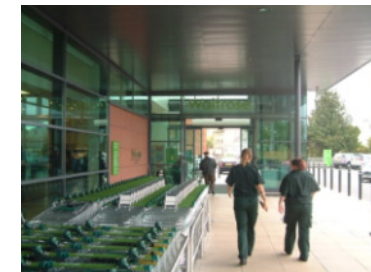
Staff accommodation and ancillary functions are contained at first floor level. The orientation of the outlook from internal spaces has been engineered to maintain privacy for the existing adjoining hospital premises.

The development is less than one kilometre from the City centre and the design presents a palette of materials to reflect this context, drawing upon references of glazing, steel and local stone to promote a modern retail image.

The Project was completed a month ahead of schedule in October 2011.



## Waitrose , Exeter



M|D|Architects

©2012 MDA