



**M | D | P**

**A R C H I T E C T S**

**DESIGN, DUE DILIGENCE, ADVICE**

**[biuro@mdparchitekci.com](mailto:biuro@mdparchitekci.com)**



os. Szkolne 30/35, 31-978 Kraków  
Tel/fax: (+ 48) 603 898 515; (+48) 608 611 290  
Email: [biuro@mdparchitekci.com](mailto:biuro@mdparchitekci.com)

## Features

Design tradition since 1903 (UK)  
Polish office since 1996  
Fully certified architects  
Large scale objects design  
Medical facilities design  
Due diligence specialists  
Design experience in Poland, UK, France



## Short info



MDP is an independent architectural studio located in Poland (Kraków) strictly cooperating with MDA (Mewes&Davis Architects) located in the UK (Plymouth).

The beginning of MDA dates back to 1903. The history of the company started from design of such famous buildings as Hotel Ritz in London and Ritz in Paris. In the end of XX century MDA became a member of specially organised centre of excellence providing full architectural services to the one of the largest retail operators – Tesco.

In 1996 together with large investment plan of their main client MDA moved part of their activities to Poland and opened offices in Warsaw and Kraków.

At the beginning of the XXI century Kraków department started to work on new fields of design including medical facilities.

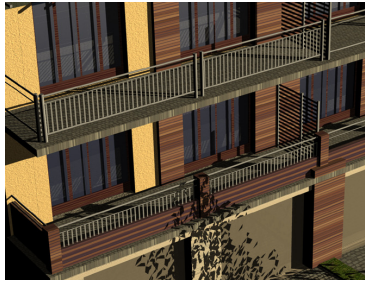
MDP provides staff of fully certified and experienced architects, members of the state Chamber of Architects since the beginning of its existence.

Offered services include close cooperation with specialists providing medical design, laboratory design, structural and engineering.

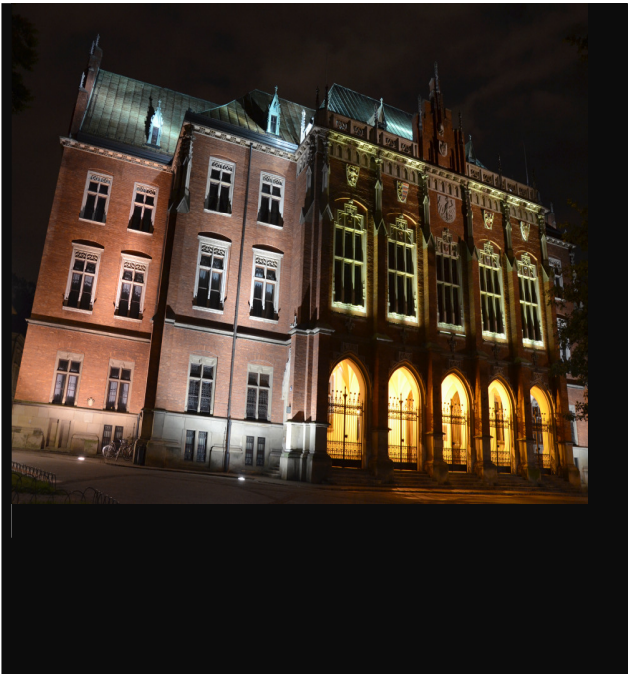
The other part of MDP services includes due diligence and advisory. The office has carried out jobs including large scale existing and planned commercial facilities in the major locations in main towns of Poland.



## Main Recent Projects



2012  
FLAT S.C., AUGUM  
Kraków and Wieliczka  
Residential schemes



2011  
Jagiellonian University Collegium  
Medicum – forensic radiology laboratory –  
Forensic Medicine Faculty

2011  
Jagiellonian University Collegium  
Medicum – experimental physiology  
laboratory - Physiology Faculty

2010  
Jagiellonian University Collegium Medicum  
– Genetics and Molecular Biology  
Laboratory – Physiology Faculty







2010

Jagiellonian University Collegium Medicum – experimental in vitro tests laboratory - Medical Physiology Faculty

2010

Science and Training Biomedical Centre – due diligence – architectural concept

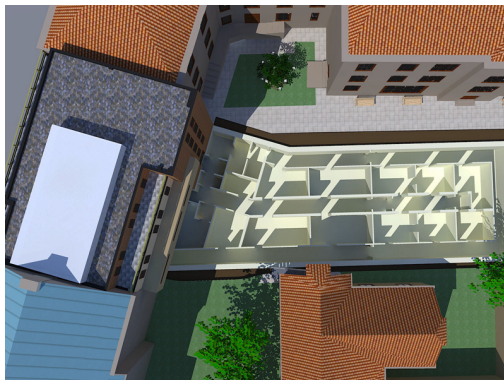
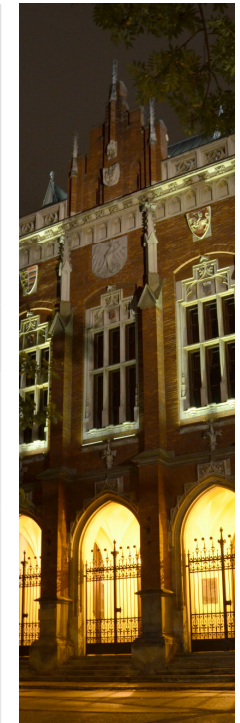


2009

Jagiellonian University Collegium Medicum – Pharmacological training department – Faculty of Pharmacy

2009

Jagiellonian University Collegium Medicum - Histopathological laboratory – Forensic Medicine Faculty



2008

Jagiellonian University Collegium Medicum  
- Post Graduate Medical Training Centre  
– training rooms, large laboratory and animal testing complex





2008  
SOF Kraków – mixed residential, service, leisure  
and hotel development – due diligence



2007  
Medinbrand – Łódź - existing townhouses – due diligence

2006  
Day & Johnson - Retail Park Gliwice – retail / service  
development site – due diligence

2006  
HELICAL Polska – Bemowo Centre – Warsaw–  
existing retail centre conversion – due diligence and  
feasibility

2006  
NESTE – Kraków (ul. Nowosądecka) – Automated  
Fuel Filling Station desing and planning application,  
due diligence – sites in Kraków and Bielsko Biała





2006

TESCO UK - Ilminster (Shudrick Lane) – store conversion

2006

TESCO UK - Coventry – store conversion - site arrangement

2006

Tennis and Bowls Club – Ilminster – sports facility

2006

AYH Homola - Warsaw – offices – due diligence

2006

Lapmaster International - Devon (lee Mill Industrial Estate)– industrial plant offices relocation

2005

France - Commune de Penmarch (Kergadec) - Private historical existing residential site conversion and extension -



2005

Saddlery – Newton Abbott (Bradley Lane) – retail

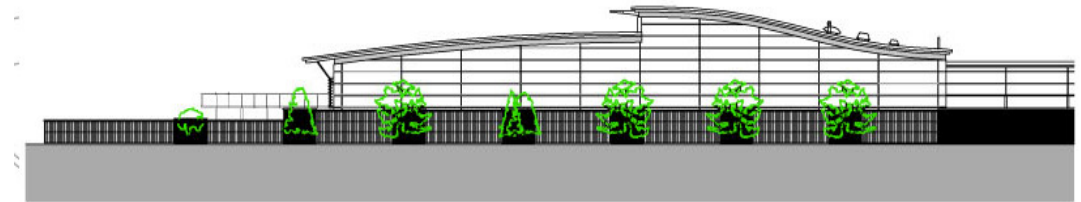






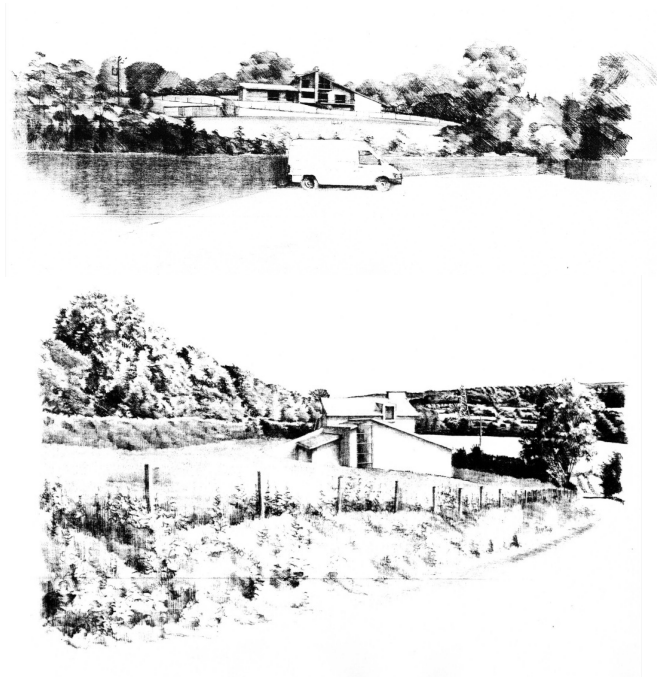


2005  
TESCO UK – Redruth – (Carn Brea Industrial Estate) – store conversion building design

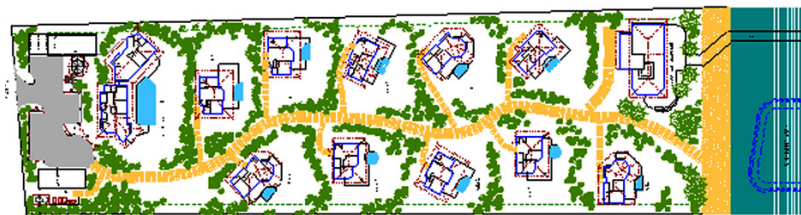
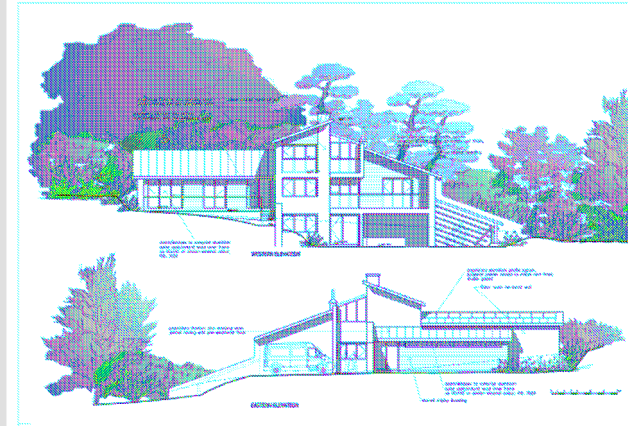


2005  
TESCO UK – Coventry – hypermarket building design  
2004  
UK Existing private residential site extension - Kent (Kennedy Gardens)  
2004  
TESCO UK – Torquay (Fleet Street) - residential and retail complex –retail (Tesco Metro)





2004  
Tartendown – private residence

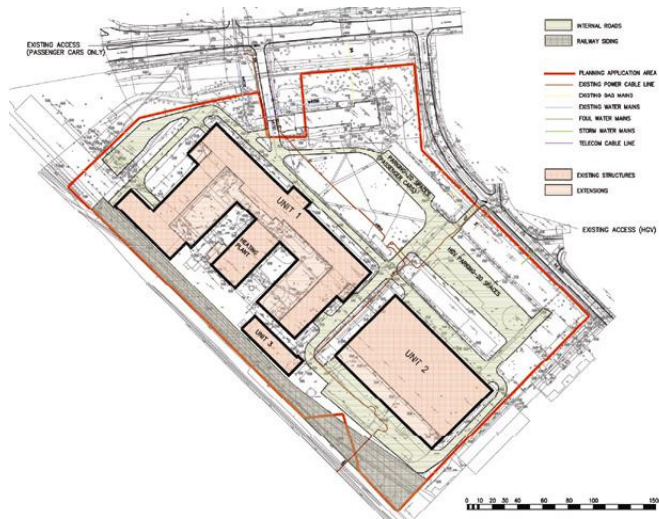


2004  
INDIAN HOLE POINT – Long Islands – Bahamas – resort  
facility



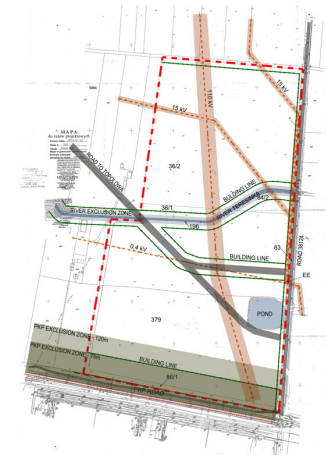


2004  
 TESCO UK – Chichester – PFS  
 architectural design  
 2004  
 Vospers Treliske – Truro – car retail and  
 showroom – architectural design



2003  
 TESCO – Teresin – Tesco Distribution Centre – due  
 diligence – site and proposed design

2003  
 TESCO Polska – Opole (ul.Ozimska) – Logistic Centre  
 design and planning application



2003  
 TESCO Polska – Mielec, Kędzierzyn Koźle, hypermarket design, planning  
 applications  
 2003  
 TESCO Polska – Świdnica, Głogów, Rybnik, Kielce due diligence and feasibility  
 studies  
 2002  
 TESCO Polska – Opole – building permit design- hypermarket  
 2002  
 TESCO Polska – Wrocław Legnicka – due diligenece – site and existing construction  
 design



2003  
TESCO Polska – Mielec, Kędzierzyn Koźle, hypermarket design, planning applications



2003

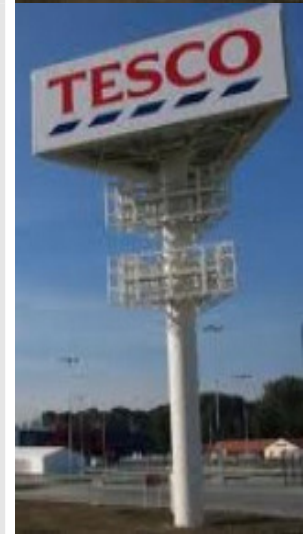
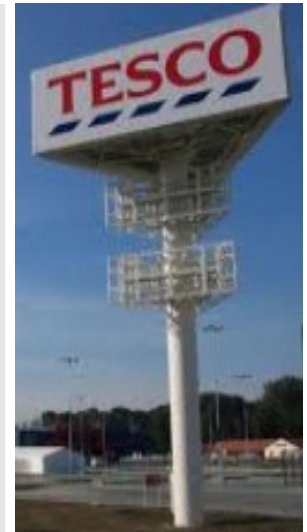
Kielce due diligence and feasibility

2002  
TESCO Polska – Wałbrzych, Kraków, Nowy Sącz, Stalowa Wola, hypermarket design, planning applications  
2001  
TESCO Polska – Gliwice, Nowy Sącz, Leszno, Tarnowskie Góry, due diligence and feasibility studies  
2001  
TESCO Polska - Gorzów Wielkopolski, Opole, - hypermarket design, planning applications

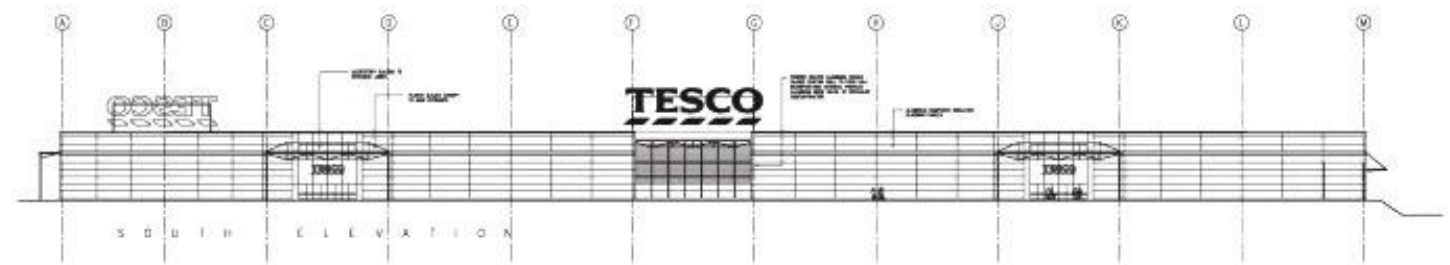
2000  
TESCO Polska – Słupsk, Tarnów, Wałbrzych, Kraków, Lubin, Kielce, Gliwice due diligence and feasibility studies

TESCO Polska – Rzeszów, Bielsko Biała, Opole, Ruda Śląska – hypermarket design, planning applications, technical, infrastructure and road design supervision

ign- hypermarket







1999  
TESCO Polska – Bytom, Tychy, Jastrzębie Zdrój,  
Lublin, Jelenia Góra, Zielona Góra, Poznań,  
Białystok, Kalisz, Zabrze, due diligence and  
feasibility studies

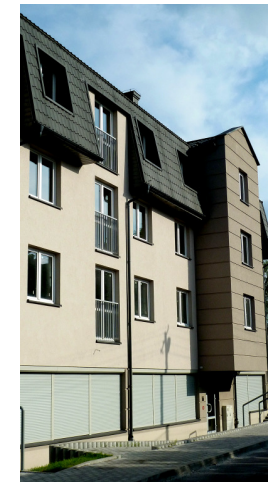
1999  
TESCO Polska – Tychy, Lublin, – hypermarket design,  
planning applications, technical, infrastructure and road  
design supervision



1998  
ALLKAUF – feasibility – Starachowice

1988  
AnnCo – office building – Kraków (*cooperation*)

1998  
POLKOMTEL – mobile phone exchange – Kraków



1998  
EUROCASH – wholesale retail – Kraków,  
(*cooperation*)



1998  
EUROCASH – wholesale retail – Kraków,  
(cooperation)



ele

1996  
Hotel Copernicus – reconstruction and adaptation of old  
townhouse – Kraków, (cooperation)



1996  
Hotel Pod Różą – major remodelling and extension – Kraków, ul.Floriańska  
(cooperation)



## Additional info

MDP provides service in english

MDP operates a fully computer aided design service using current release AutoCAD



The logo consists of a solid black horizontal rectangle. Inside the rectangle, the letters 'M', 'D', and 'P' are displayed in a large, bold, sans-serif font. The 'M' is white, the 'D' is a medium gray, and the 'P' is a burnt orange color. Each letter is separated from the others by a thin, vertical white line.

**M | D | P**

**A R C H I T E C T S**

**DESIGN, DUE DILIGENCE, ADVICE**

**[biuro@mdparchitekci.com](mailto:biuro@mdparchitekci.com)**